

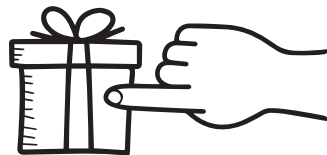


# private *virtual* events by perennial



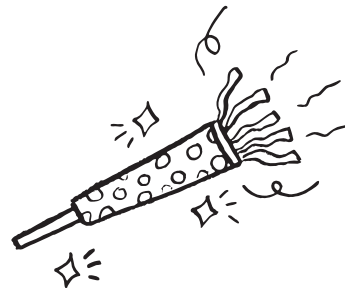
## gather the team

Let us know your headcount to get started! We can accommodate groups large and small with packages.



## pick a package

We've curated both lunch & learn and happy hour programs—there's something for everyone!



## have a blast!


We'll provide the tools, materials + instruction you'll need to have a fun and educational time

## Events with Impact!

Start the sustainability conversation in your organization through our fun and educational programming for adults!




# Two hands-on team-building options!



## Lunch + Learns

Want to combine learning with hands-on upcycled crafts? Perennial will provide a short presentation on ways to reduce environmental impact by reusing common everyday materials. Then everyone will have a chance to get crafty, choose between pollinator hotels or seed starters!

Perfect for green teams or Earth Day programming!



## Team Happy Hour

Want to emphasize fun? Adding upcycled crafts to a team event is an engaging, hands-on way to socialize. You'll learn how to re-purpose materials that might otherwise be thrown away. Choose between making woven coasters from t-shirt yarn or mini bulletin boards from wine corks and woodscraps. Plus everyone will craft their own simple photo stand!

A great addition to your next brainstorming session, meeting, or retreat.

## what you get:

- Material kits for each guest to make a handmade craft
- Live craft instruction from a Perennial teaching artist
- Zoom session
  - Lunch + Learns: 1 hr
  - Team Happy Hours: 1.5 hr session

## pricing

- Pricing starts at \$300 for up to 15 people.
- Additional guests can be added for \$15 each
- Add a beverage! We have special discounts from local vendors for your boozy needs!
- Contact us for discounts on large events (50+ people)

## FAQ's

*Q: Are virtual events any fun?*

*A: Of course! Crafting is the perfect antidote to dull and awkward virtual happy hours. Everyone has something to do and guests will get to chat as they make something new. Engage your team while staying safe and healthy.*

*Q: What if my team isn't crafty?*

*A: Our projects are great for beginners! Your team will be surprised by what they can accomplish with upcycled materials and (gently) pushing people out of their comfort zone is important for team-building.*

*Q: What size group can you accommodate?*

*A: Our base packages are for up to 15 folks but you can add additional guests up to 75 depending on the type of event you are planning. Contact us for bulk pricing discounts for events over 50 people.*

*Q: Can you ship materials to my team?*

*A: Local shipping can be arranged for events that are booked at least a month in advance for an additional \$15 per participant.*

*Q: What is Perennial?*

*A: We're a non-profit that teaches people how to turn discarded items into cherished resources. When you host a party with Perennial you're supporting all of our sustainability efforts and helping the team keep more pounds out of the landfill.*

## contact us!

Ready to book your next event?

Reach out to our Program Director by emailing:

[events@perennialstl.org](mailto:events@perennialstl.org)